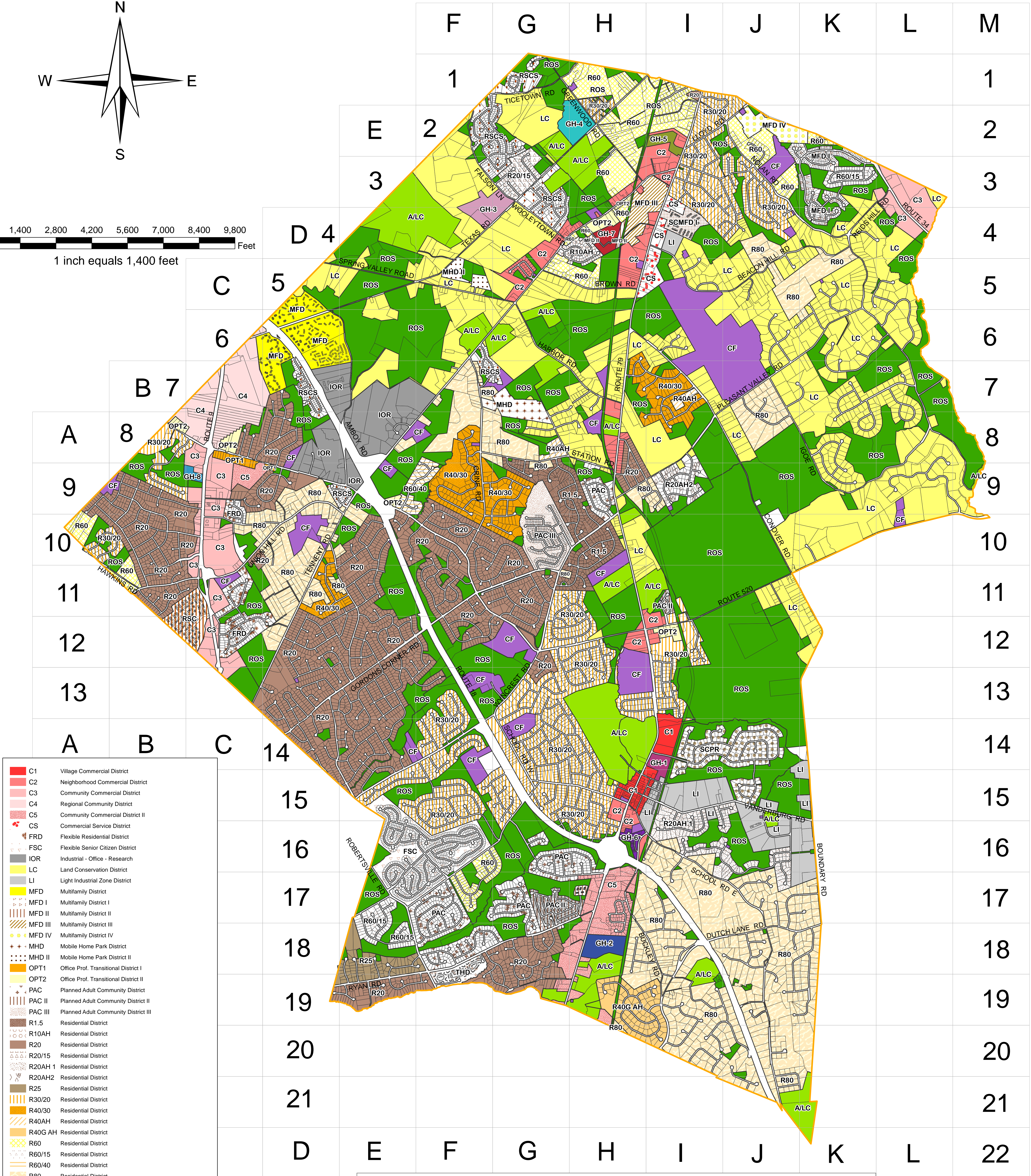
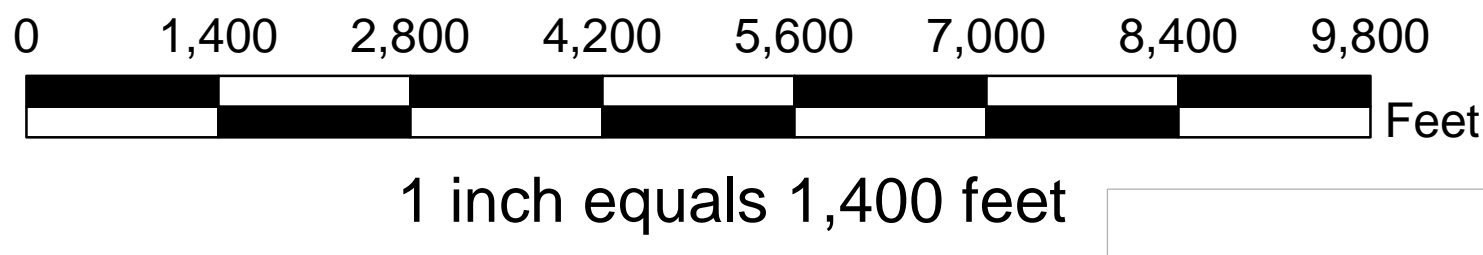
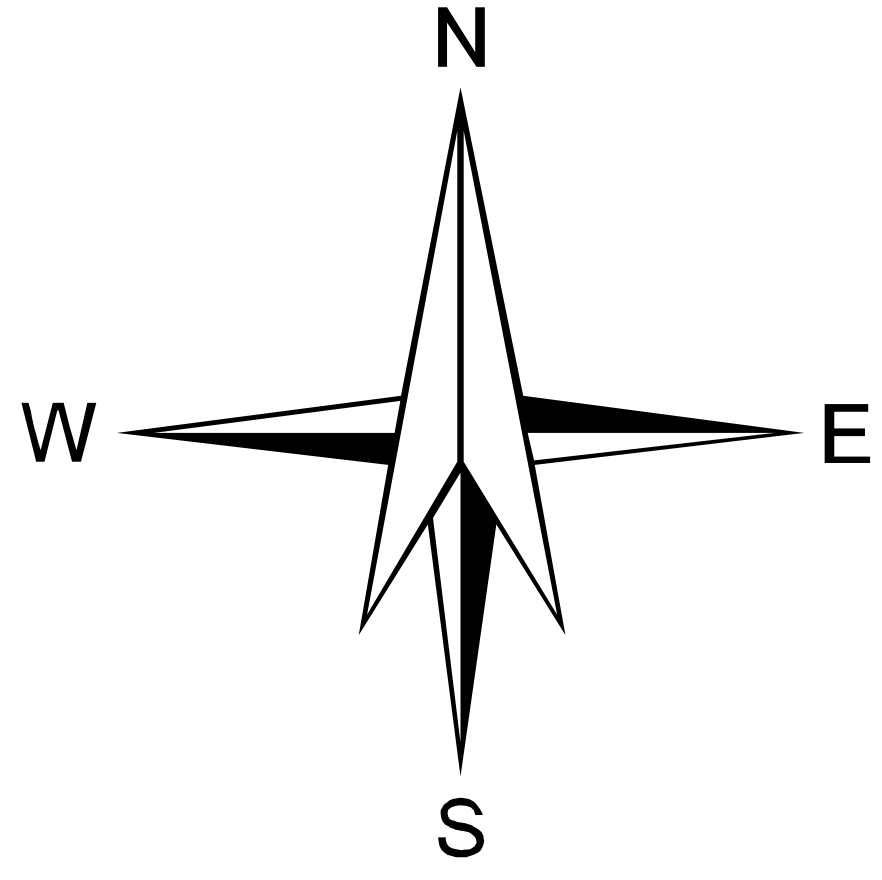


ZONING MAP MARLBORO TOWNSHIP



- | | | |
|--|---------|---|
| | C1 | Village Commercial District |
| | C2 | Neighborhood Commercial District |
| | C3 | Community Commercial District |
| | C4 | Regional Community District |
| | C5 | Community Commercial District II |
| | CS | Commercial Service District |
| | FRD | Flexible Residential District |
| | FSC | Flexible Senior Citizen District |
| | IOR | Industrial - Office - Research |
| | LC | Land Conservation District |
| | LI | Light Industrial Zone District |
| | MFD | Multifamily District |
| | MFD I | Multifamily District I |
| | MFD II | Multifamily District II |
| | MFD III | Multifamily District III |
| | MFD IV | Multifamily District IV |
| | MHD | Mobile Home Park District |
| | MHD II | Mobile Home Park District II |
| | OPT1 | Office Prof. Transitional District I |
| | OPT2 | Office Prof. Transitional District II |
| | PAC | Planned Adult Community District |
| | PAC II | Planned Adult Community District II |
| | PAC III | Planned Adult Community District III |
| | R1.5 | Residential District |
| | R10AH | Residential District |
| | R20 | Residential District |
| | R20/15 | Residential District |
| | R20AH 1 | Residential District |
| | R20AH 2 | Residential District |
| | R25 | Residential District |
| | R30/20 | Residential District |
| | R40/30 | Residential District |
| | R40AH | Residential District |
| | R40G AH | Residential District |
| | R60 | Residential District |
| | R60/15 | Residential District |
| | R60/40 | Residential District |
| | R80 | Residential District |
| | RSC | Senior Citizen Residential District |
| | RSCS | Senior Citizen Residential & Single Family District |
| | SCMFD I | Senior Citizen Multifamily District I |
| | SCPR | Stream Corridor Preservation Residential District |
| | THD | Townhouse District |
- Zoning 2019 Amendment Layer**
- | | | |
|--|------|---------------------------------|
| | A/LC | Agriculture / Land Conservation |
| | CF | Community Facilities |
| | GH-1 | Generational Housing 1 |
| | GH-2 | Generational Housing 2 |
| | GH-3 | Generational Housing 3 |
| | GH-4 | Generational Housing 4 |
| | GH-5 | Generational Housing 5 |
| | GH-6 | Generational Housing 6 |
| | GH-7 | Generational Housing 7 |
| | GH-8 | Generational Housing 8 |
| | ROS | Recreation and Open Space |

Zoning Map

Township of Marlboro
Engineering Department
Geographic Information System

Greg Valesi, PE, PP, CME, Township Engineer
Dean Staknys, PE, Assistant Township Engineer
Steven Gottlieb, PP, LLA, Zoning Officer

New Jersey State Plane Coordinate System
North American Datum 1983/92
North American Vertical Datum 1988

Date: 8-25-2011
Last Revised: 04-28-2022

1979 Township Drive, Marlboro, New Jersey, 07746
Phone: (732) 536-0200
Fax: (732) 972-7697

Photography Date: Winter 2008/2009
Photography Scale: 1"=660'

Drawn By: C. Brady
Revised By: S. Gottlieb
File: Marlboro_Zoning_Map.mxd

BASEMAP COPYRIGHT, 1997, 2003 COUNTY OF MONMOUTH