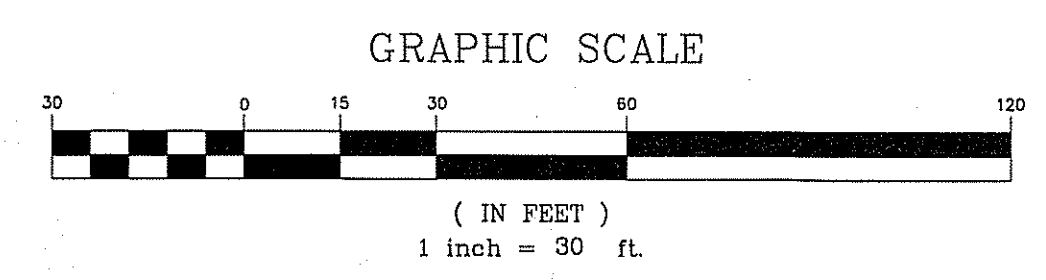


PARKING LOT STRIPING & SIGNAGE DETAIL
(SCALE: 1" = 30')

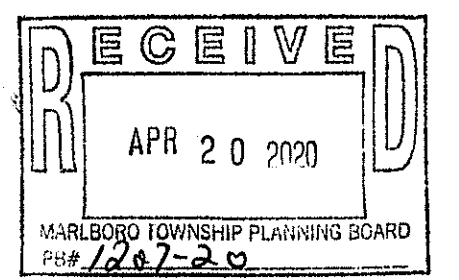
GENERAL NOTES:

1. BOUNDARY INFORMATION TAKEN FROM A PLAN ENTITLED, "PRELIMINARY & FINAL MAJOR SITE PLAN, PHASE 1 LOT 31, BLK. 415" PREPARED BY TWO RIVER ENGINEERING, DATED 10-10-08 AND REVISED THRU 06-04-10.
2. ELEVATIONS BASED UPON BENCHMARKS AS LISTED IN THE ABOVE REFERENCED PLAN.
3. FIELD WORK FOR THIS AS-BUILT WAS COMPLETED ON AUGUST 15, 2011.
4. VERTICAL BENCHMARK FOR THE SITE IS THE SAMPLING MANHOLE. (SEE PLAN) ELEVATIONS ARE BASED UPON NAVD 88 ESTABLISHED VIA GPS OBSERVATIONS.



LEGEND:

- ⊙ - STORM MANHOLE
- ⊙ - SANITARY MANHOLE
- ⊙ - STORM CATCH BASIN
- ⊙ - UTILITY POLE
- ⊙ - LIGHT POLE
- ⊙ - SPOT GRADE
- ⊙ - TOP OF CURB ELEV.
- ⊙ - WATER VALVE
- ⊙ - HYDRANT
- ⊙ - CLEANOUT



FINAL AS-BUILT
LOT 31, BLOCK 415
133 SOUTH MAIN STREET
TOWNSHIP OF MARLBORO, MONMOUTH COUNTY, NEW JERSEY

THIS DRAWING AND ALL INFORMATION CONTAINED HEREIN IS AUTHORIZED FOR USE ONLY BY THE PARTY FOR WHOM THE WORK WAS CONTRACTED OR TO WHOM IT IS CERTIFIED.

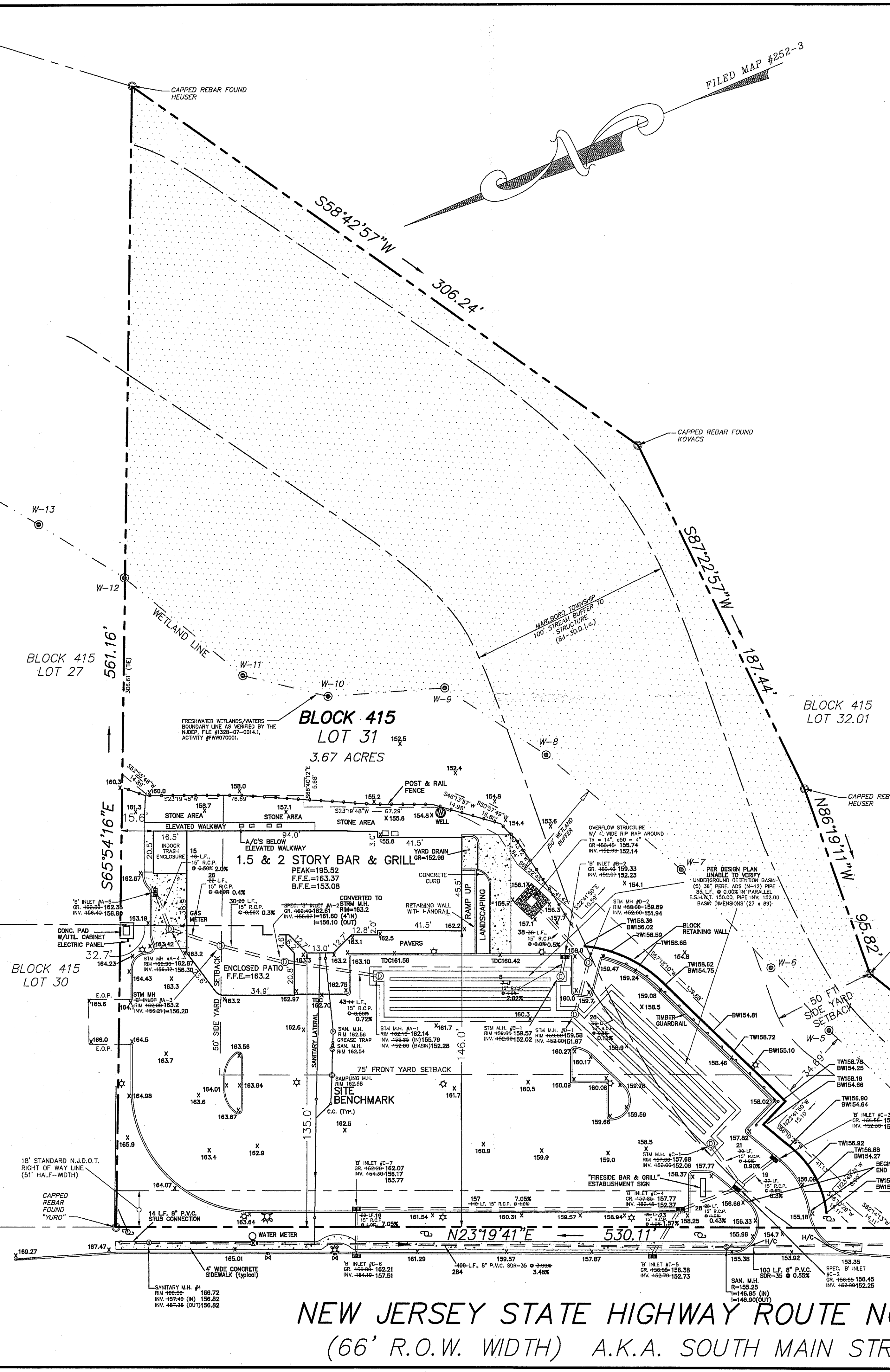
04-06-20	ADD INFO ON INLET CONVERTED TO M.H. W/IN ENCLOSED PATIO
04-05-20	SHOW COVERED PATIO & MISC. UPDATES
12-29-12	SAN. FLOW ARROWS, STREET ADDRESS, GREASE TRAP, ETC.
DATE	REVISION

Kenneth P. Frank
KENNETH P. FRANK
PROFESSIONAL LAND SURVEYOR, N.J. LIC. NO. 36727

KF2
Professional Land Survey

P.O. BOX 521
COLTS NECK TOWNSHIP, MONMOUTH COUNTY
NEW JERSEY 07722

TEL (908) 692-7853 FAX (609) 698-5350



NEW JERSEY STATE HIGHWAY ROUTE NO. 79
(66' R.O.W. WIDTH) A.K.A. SOUTH MAIN STREET