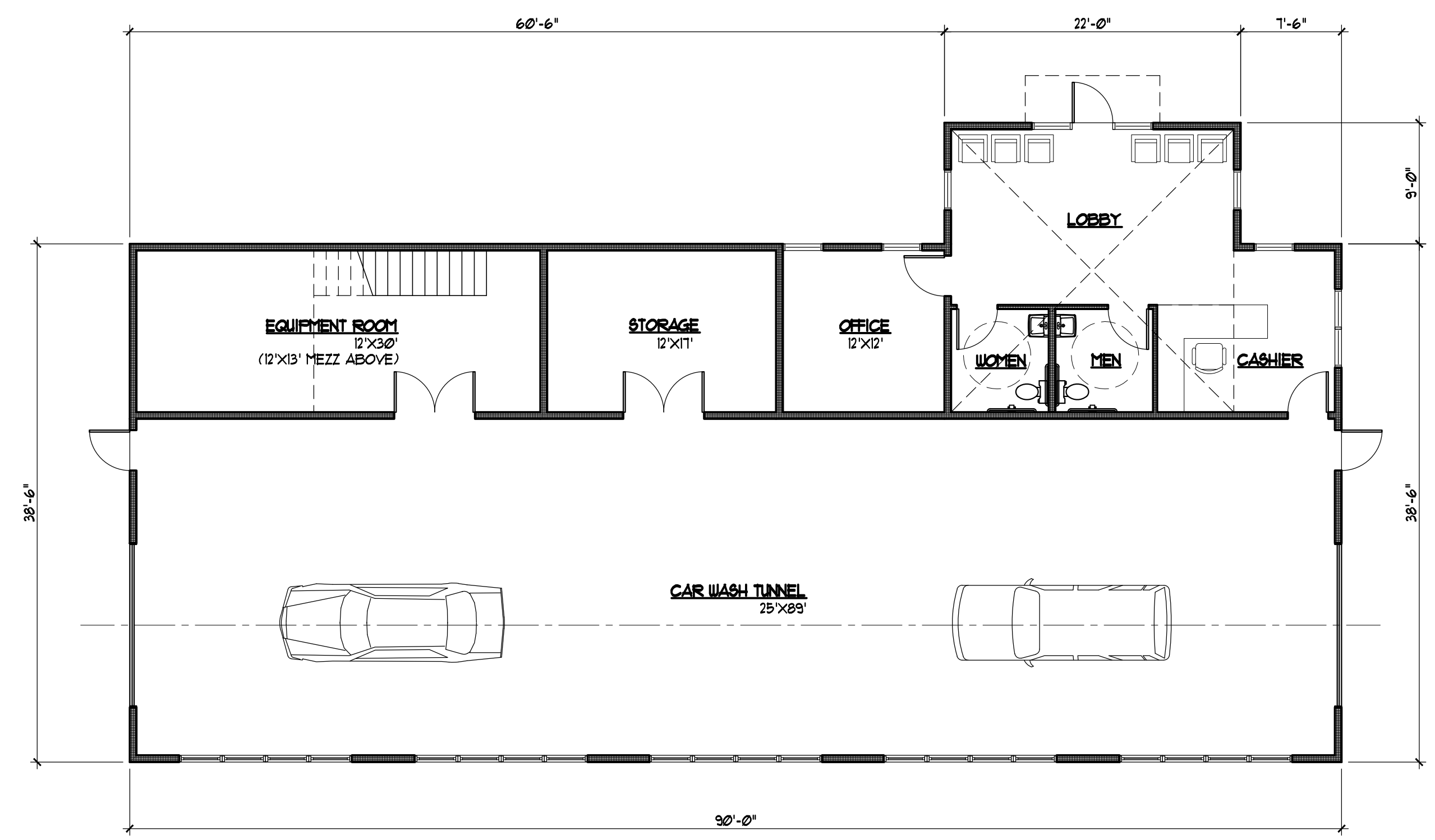


5 WEST ELEVATION
 1/8" = 1'-0"

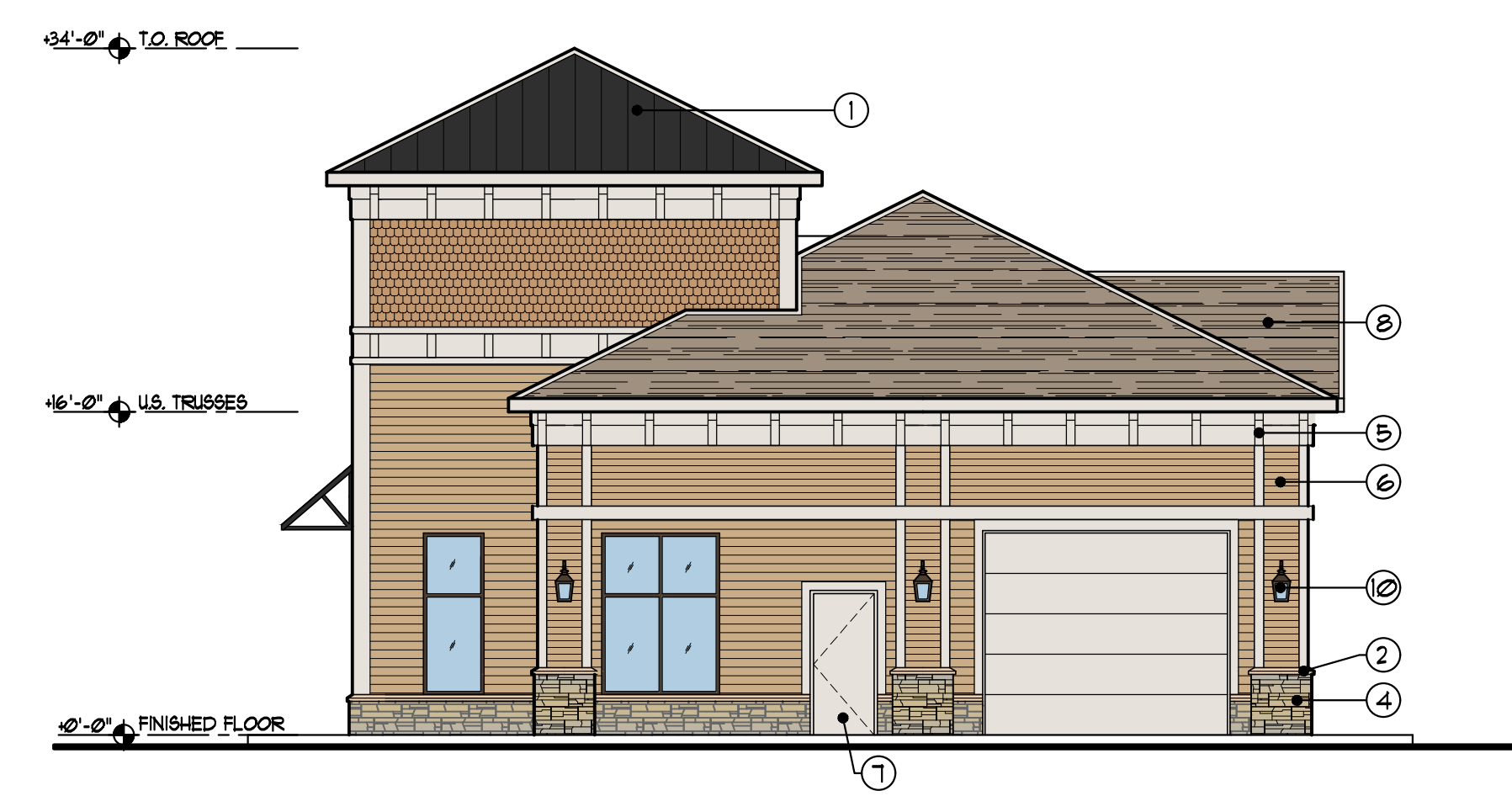


4 NORTH ELEVATION
 1/8" = 1'-0"

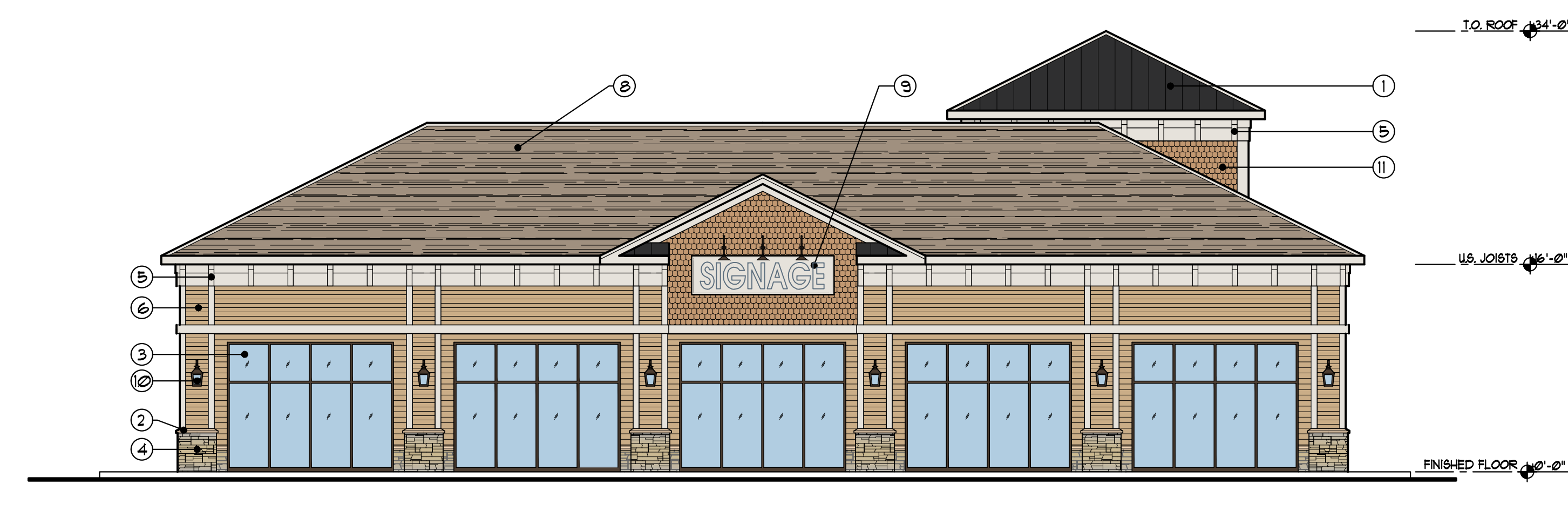
| FINISH KEY LEGEND | |
|-------------------|--|
| ① | STANDING SEAM METAL ROOF COLOR AND STYLE TBD |
| ② | PRECAST WATER TABLE ANCHOR CONCRETE ROCKFACE - COLOR TO COORDINATE WITH FAUX STONE |
| ③ | STOREFRONT GLASS ANODIZED ALUMINUM TO MATCH EXISTING |
| ④ | FAUX STONE VENEER COLOR AND STYLE TBD |
| ⑤ | MOLDINGS - EXTRUDED SHAPES POLYSTYRENE CORE W/ REIN. FIBERGLASS FINISH IN SHAPES AS TO BE DETAILED |
| ⑥ | HORIZONTAL SIDING COLOR AND STYLE TBD |
| ⑦ | HOLLOW METAL EXIT DOOR PAINT TO COMPLEMENT FACADE COLOR |
| ⑧ | DIMENSIONAL ROOF SHINGLES COLOR AND STYLE TBD |
| ⑨ | NON-INTERNALLY ILLUMINATED SIGNAGE WITH GOOSENECK LED LIGHTING |
| ⑩ | DECORATIVE SCONES LED WALL WASHER FIXTURES |
| ⑪ | FAUX CEDAR SHAKES COLOR AND STYLE TBD |



3 FLOOR PLAN
 1/8" = 1'-0"
 3,663 SF



2 SOUTH ELEVATION
 1/8" = 1'-0"



1 EAST ELEVATION
 1/8" = 1'-0"

NEW CAR WASH BUILDING FOR:
MARLBORO MALL

8 SOUTH MAIN STREET
 MARLBORO TOWNSHIP, NEW JERSEY
 LOTS: 2 & 3 BLOCK: 351

RECORDER PEREZ, AIA
 NJ 12460 CT 09723 FL 0016818
 NY 030745-1 MA 30076
 Stephen L. Radosti, AIA
 NJ 10509 FL 04074

Perez + Radosti
 associates, p.c.

P+Ra
 Architecture
 Interior Design
 www.perezradosti.com
 379 Princeton Hightstown rd, suite 308, Cranbury, NJ 08512 tel. 609.443.4031 fax 609.443.5277