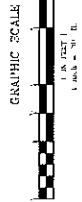
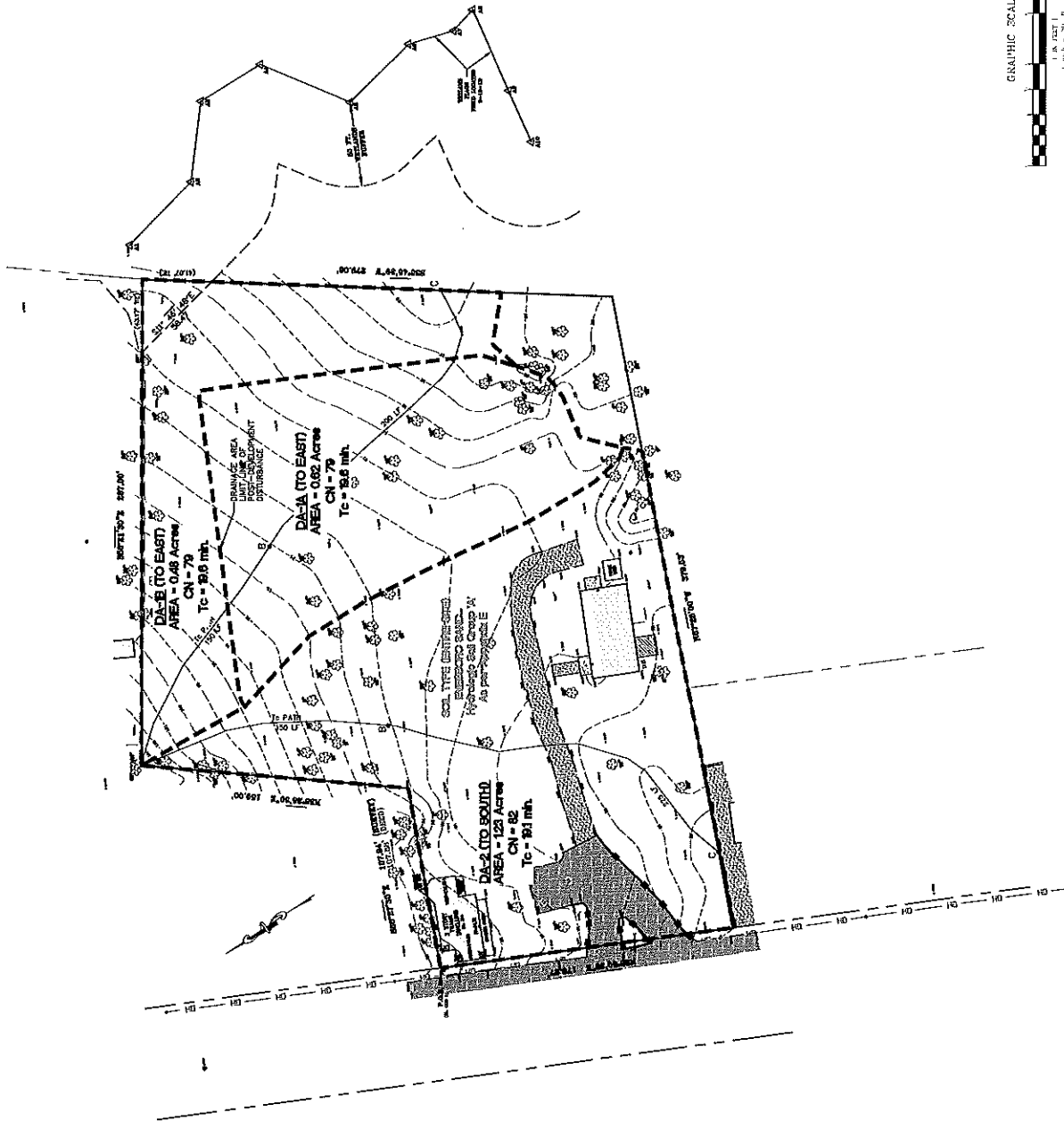


A-23

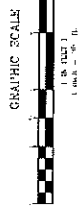
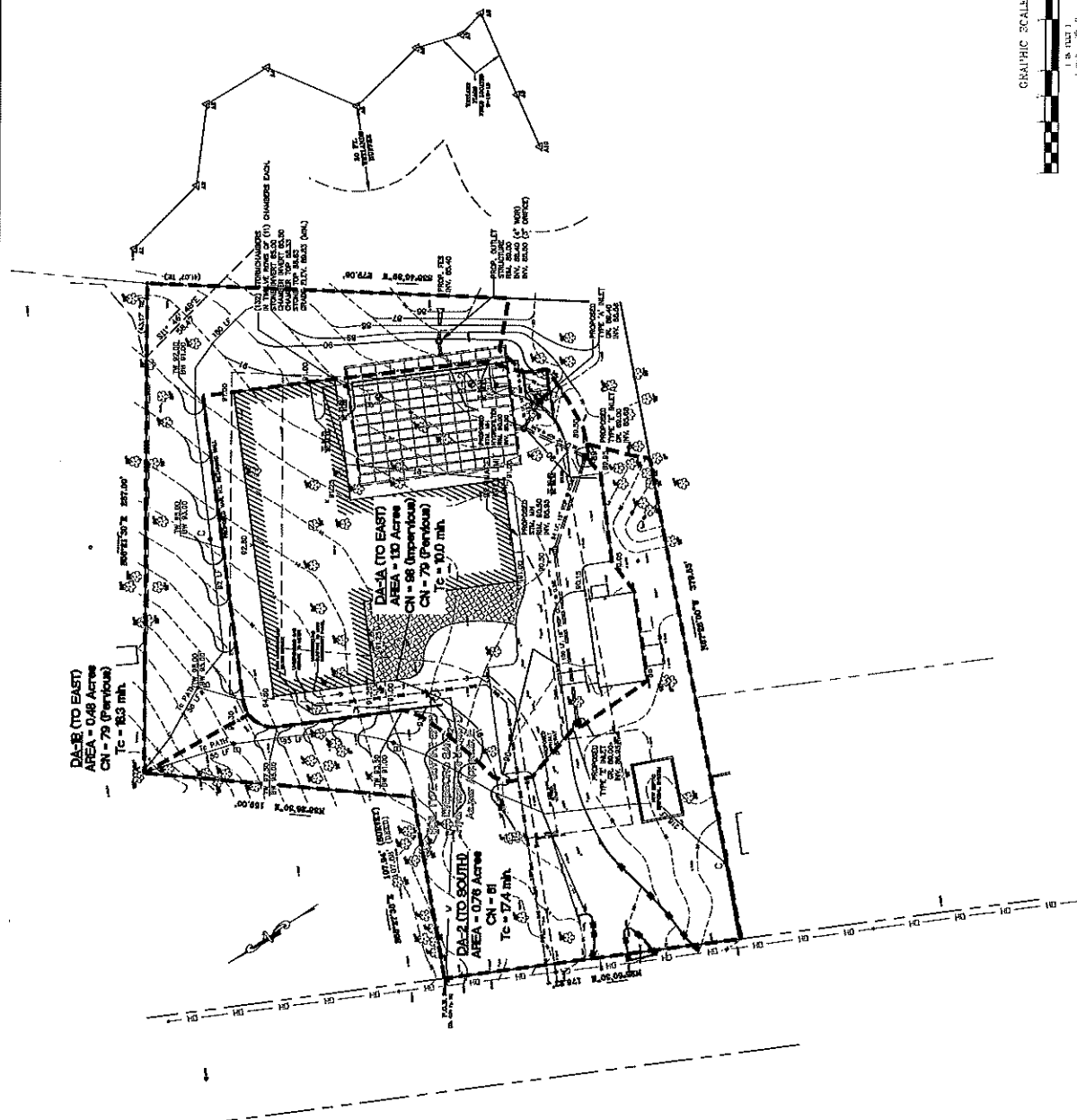


PRELIMINARY & FINAL MAJOR BITE PLAN  
 PRE-DEVELOPMENT FOR THE PHASE AREA MAP  
 TAX MAP SHEET NO. 91

**EAST POINT ENGINEERING, L.L.C.**  
 11 South 19th Street  
 Aurora, WI 53006  
 414-885-0000  
 www.eastpointeng.com

PROJECT NO. 17-00000000  
 SHEET NO. 1 OF 2

THIS PLAN IS THE PROPERTY OF EAST POINT ENGINEERING, L.L.C. AND IS NOT TO BE REPRODUCED OR TRANSMITTED IN ANY FORM OR BY ANY MEANS, ELECTRONIC OR MECHANICAL, INCLUDING PHOTOCOPYING, RECORDING, OR BY ANY INFORMATION STORAGE AND RETRIEVAL SYSTEM, WITHOUT THE WRITTEN PERMISSION OF EAST POINT ENGINEERING, L.L.C.



<b>PRELIMINARY &amp; FINAL MAJOR SITE PLAN</b> 334 ROUTE 79 POST-DEVELOPMENT PHASE AREA MAP TOWNSHIP OF HANCOCK, NEW JERSEY	
THE MAP SHEET NO. 31	
<b>EAST POINT ENGINEERING</b> 1500 ROUTE 79 MARYS PT NJ 07043	
PROJECT NO. 08-20-80	DATE 08/20/80
DRAWN BY M. J. LEIDER	CHECKED BY M. J. LEIDER
SCALE 1" = 100'	SHEET NO. 31 OF 31